



VOLUNTEERS WANTED!

HERRING RIVER RESTORATION PROJECT

SHELLFISH STAKEHOLDER SAMPLING INITIATIVE



Summary

The Herring River Restoration Project is sponsoring a stakeholder-driven monitoring project to supplement data collected in Wellfleet Harbor. Using the expertise of shellfish stakeholders who experience the hydrodynamic environment of the harbor every day, water samples will be collected and analyzed for suspended-sediment concentration. This new dataset will capture short-term changes and localized patterns of suspended-sediment at highly valuable locations near active shellfishing areas. The data collected as part of this initiative will be shared with the public on the Friends of Herring River website, be compared with ongoing sediment monitoring efforts at Chequessett Neck Road Dike, and used to better understand sediment transport patterns in Wellfleet Harbor.

Location

The most critical locations for this sampling program include: Egg Island, Powers Landing, Town Propagation area, Mayo Beach, Indian Neck, Chipmans Cove, and Duck Creek. These locations are prioritized for their proximity to the Herring River, commercial shellfishing operations, and colocation of previous bed sediment sampling (see map).

Samples will be taken at a set location that is convenient for the volunteer, within or adjacent to their normal work area. At the first round of sampling, a project representative will mark the location with GPS. Sampling will be repeated at this location during the duration of the study. Sampling will begin in May 2018 and continue as long as possible.

Methods for Volunteers

- Grab water samples will be taken every 3-6 weeks on a set day, based on tidal conditions, beginning in May.
- Volunteers will be given datasheets and water bottles and shown the procedure for taking samples.
- Note date and time.
- Note phase of tide and depth of water.
- Note the clarity or visual amount of sediment in the water.
- Record additional remarks including weather or any unusual observations.

The entire sampling (water sample collection and datasheet completion) should take no more than 5 minutes to complete.

Volunteers will return samples and datasheets to the Shellfish Office at the Town Pier.

If interested or for more information, please contact Katie Lavalley, NPS geoscience intern, at Katherine.lavalley@partner.nps.gov. Training will occur in April on an individual basis.



VOLUNTEERS WANTED! HERRING RIVER RESTORATION PROJECT SHELLFISH STAKEHOLDER SAMPLING INITIATIVE

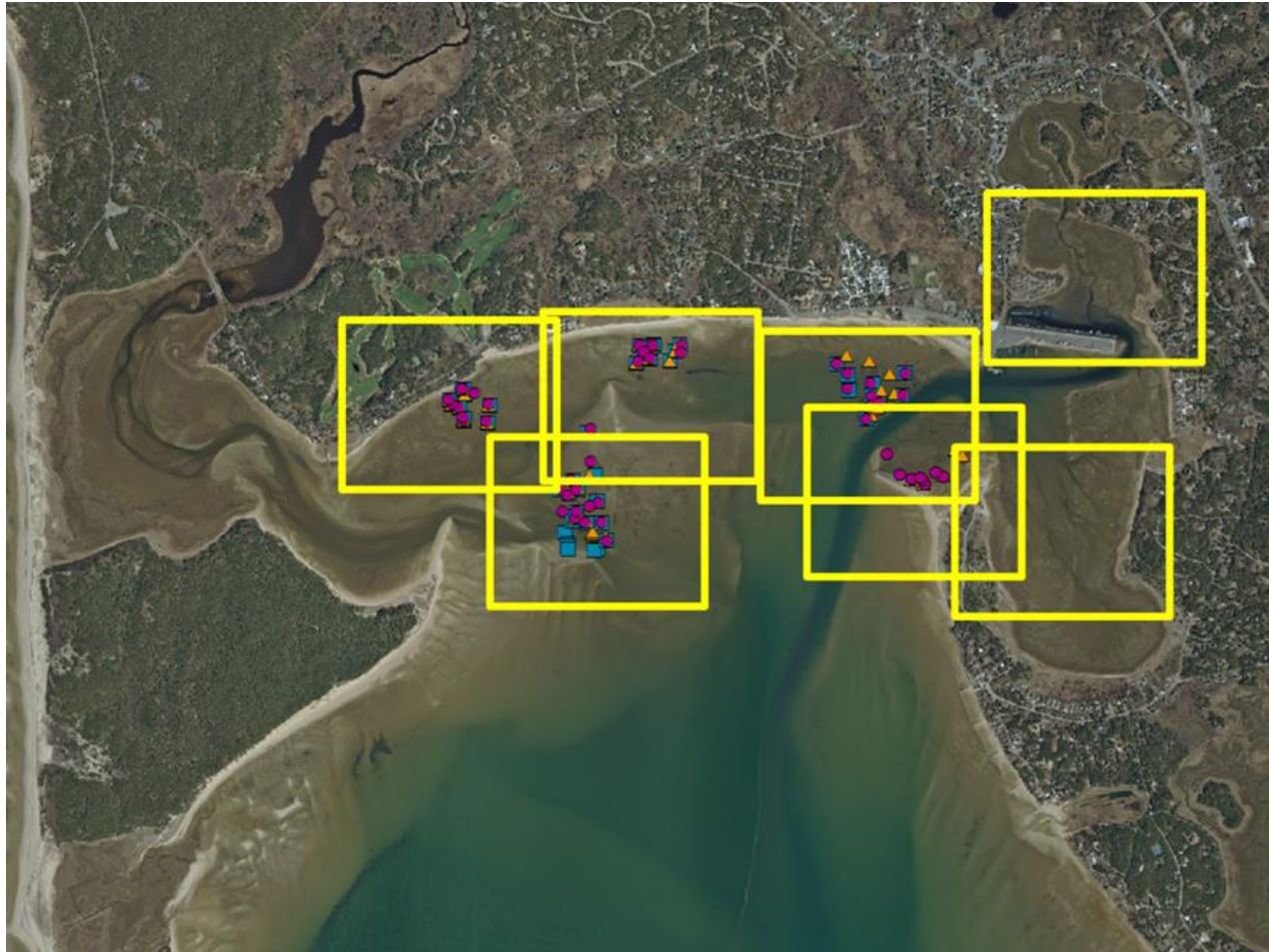


Figure 1. Location of priority areas for the sampling program are outlined in yellow boxes. Small colored symbols indicate locations of bed sediment monitoring.